

# PNWER Market Access Panel



GROWING JOBS. EXPANDING TRADE.

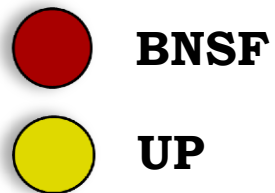
Wendy Hutchinson  
Vice President Public Affairs

**July 13, 2015**

# MILLENNIUM LOCATION



# RAIL MEETS RIVER

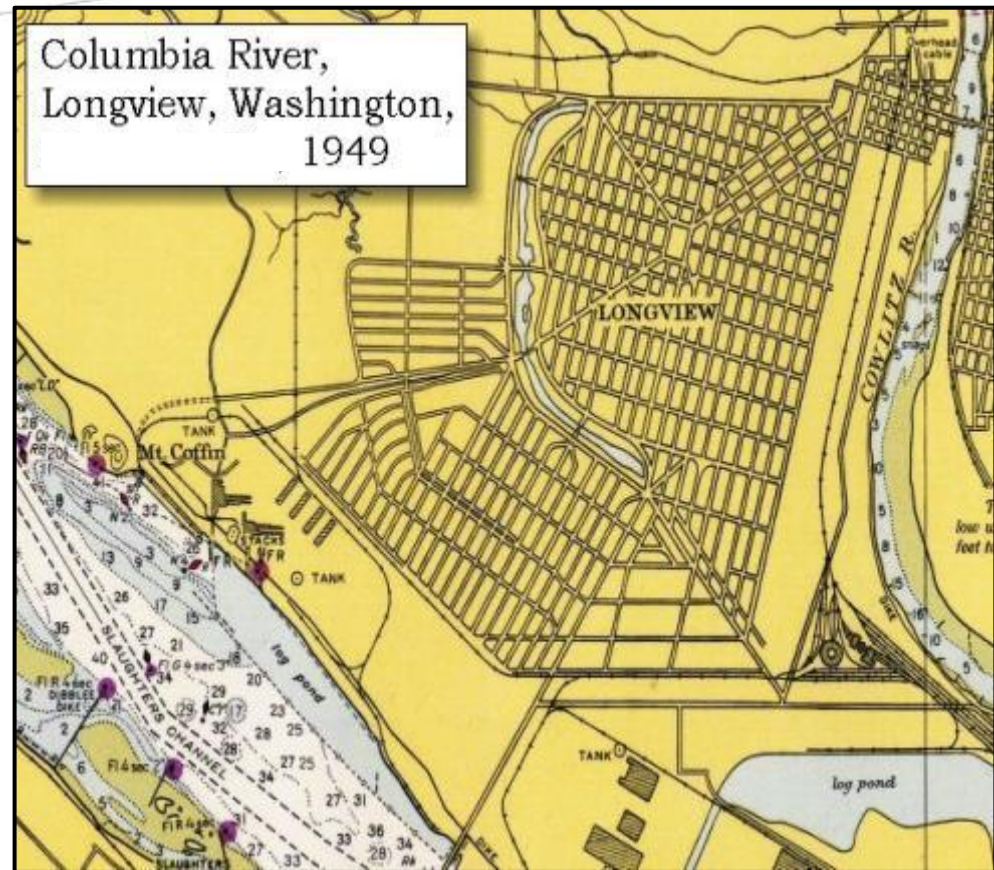




# THE PLANNED CITY

**Throughout its first 90 years, Longview.....**

- ◆ **Had a remarkable record of labor stability**
- ◆ **Good paying jobs**
- ◆ **Outstanding schools**
- ◆ **And outstanding health care facilities**





# LONGVIEW LOCATION





# MILLENNIUM SITE



# MILLENNIUM IS AN OPERATING PORT

**Operating Bulk Product Terminal (Port)**

**Cleaning Up A 70 Year Old Smelter Site**

**Developing a New Coal Export Terminal**

**Expanding Existing Bulk Product Terminal**



# COMMITMENT TO SAFETY & ENVIRONMENT

## MILLENNIUM BULK TERMINALS

### KEY PERFORMANCE INDICATORS - DAYS

- SAFETY
  - Lost Time 1563
  - Reportable Injury 1024
- EQUIPMENT 382
- ENVIRONMENTAL 1644

**PROTECT YOUR HANDS – USE YOUR HEAD !**



# MILLENNIUM OWNERSHIP



# COURTYARDS

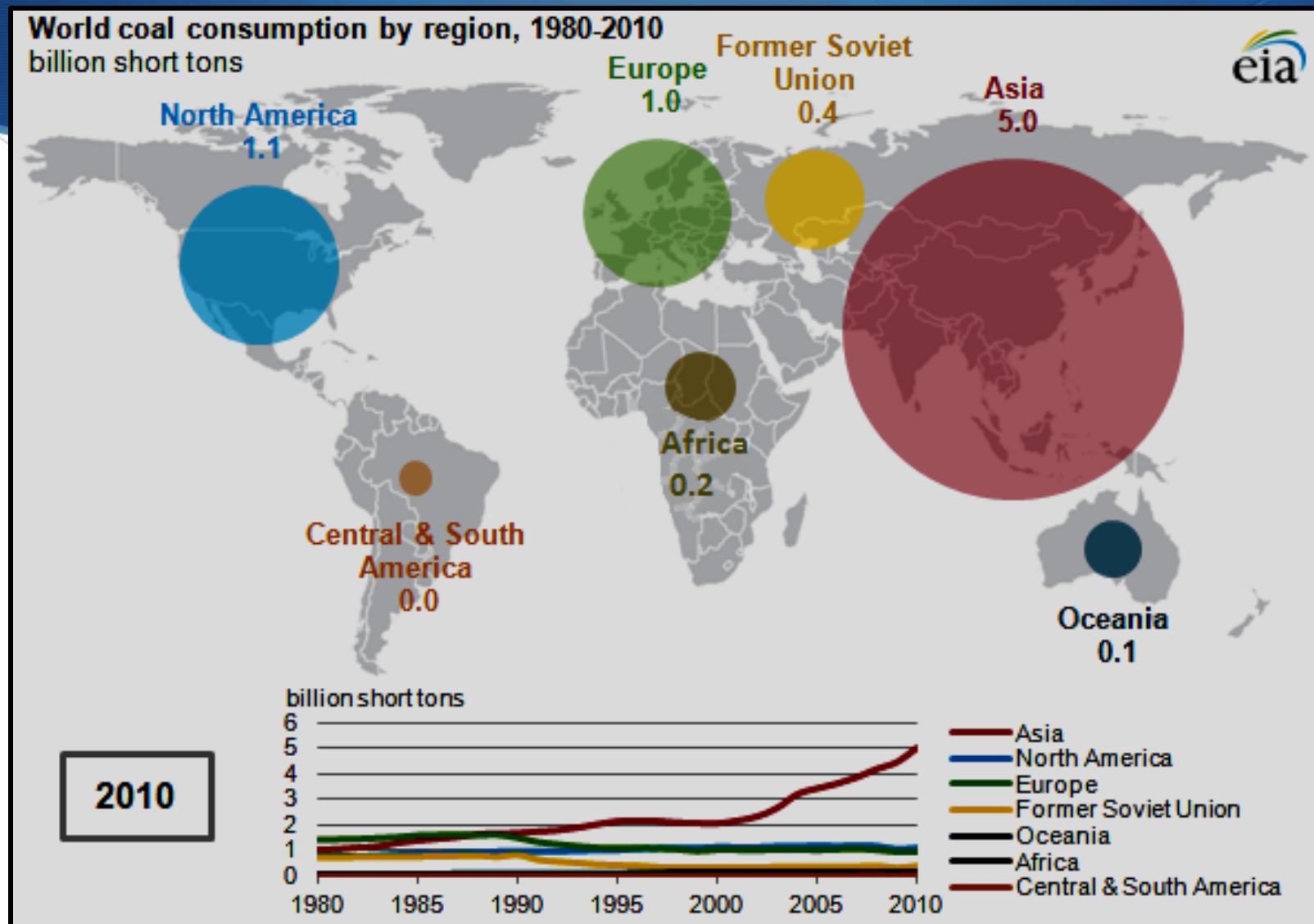
**Prior Conditions**



**Existing Conditions**



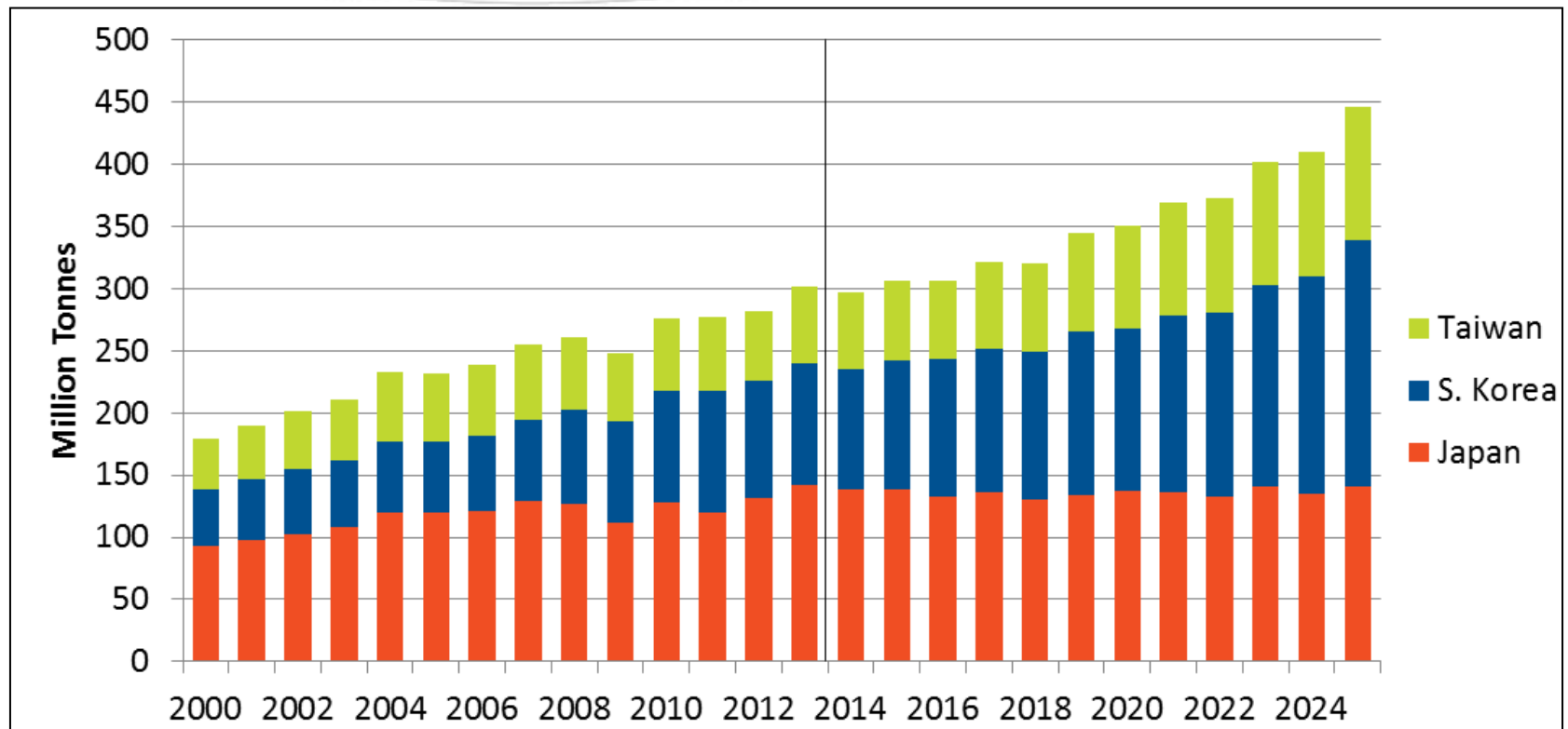
# COAL FOR ELECTRICITY



Source: US Energy Information Administration website [www.eia.gov](http://www.eia.gov)



# COAL GROWTH: DEVELOPED ASIA



Source: IEA, ACI, McCloskey

# COAL EXPORT TERMINAL



# COAL EXPORT TERMINAL PROJECT STATISTICS

## ◆ Stage 1

- ◆ 25 Million Tonnes / Year capacity
- ◆ 2 Docks – 1 Shiploader - 5 Train Parking Slots
- ◆ 750,000 Tonne stockpile area
- ◆ \$400 Million Capital Expenditure

## ◆ Stage 2

- ◆ 44 Million Tonnes / Year capacity
- ◆ 2 Docks – 2 Shiploaders - 8 Train Parking Slots
- ◆ 1.5 Million Tonne stockpile area
- ◆ \$678 Million Capital Expenditure



# SITE RENDERING



# ECONOMICS & JOBS

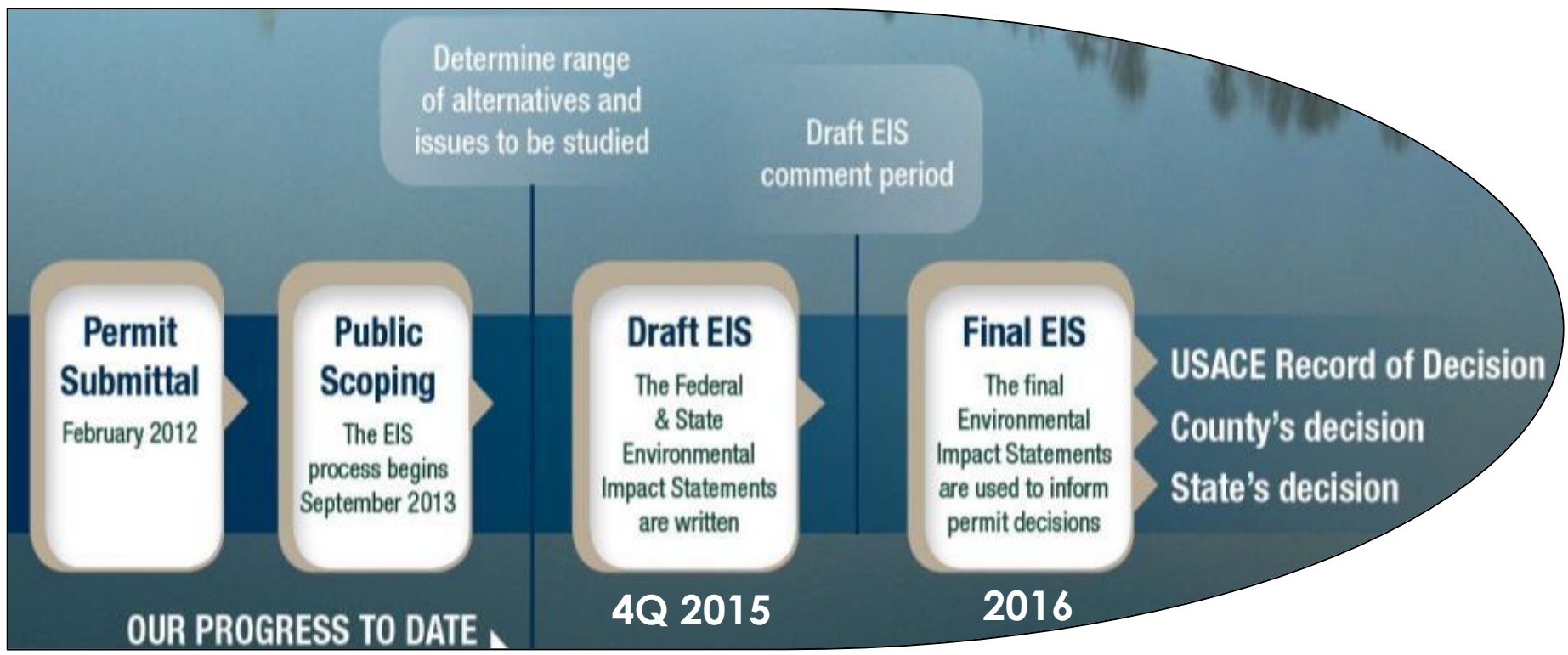
## Direct Fiscal Impacts of the Coal Export Terminal

Fiscal Impacts	30-Year PV (2012)	Annual Average (2012)	One-time Construction (2012)
County	\$ 38.24 M	\$ 1.65 M	\$ 5.87 M
State	\$ 78.99 M	\$ 2.18 M	\$ 37.21 M
Special Purpose Districts	\$ 28.54 M	\$ 1.45 M	-
<b>Total</b>	<b>\$ 145.77 M</b>	<b>\$ 5.28 M</b>	<b>\$ 43.09 M</b>

Note: Fiscal analysis only considers taxes from direct impacts and are presented in 2012 dollars.

	Construction	Operations (Stage 1)	Operations (Buildout)
<b>Jobs Total</b>	<b>2,650</b>	<b>230</b>	<b>300</b>
Direct	1,350	112	135
Indirect & Induced	1,300	118	165

# PERMITTING PROGRESS





# LOCAL SUPPORT



# Attorney General Fox (MT) and AG Stenehjem (ND) Comment



- ◆ Burdens or prevents interstate commerce in violation of the commerce clause of the U.S. Constitution
- ◆ Is outside the scope of the Washington state's authority under the U.S. Constitution and Washington law.
- ◆ Is unrealistically broad and includes speculative and indirect impacts.
- ◆ Requires impossible assessments of foreign environmental impacts.
- ◆ Appears to have been designed to hinder development of any coal export terminals

# GLOBAL SCOPE FOR WA COAL TERMINALS

- ◆ A detailed assessment of rail transportation on other representative communities in Washington and a general analysis of out-of-state rail impacts.
- ◆ An assessment of how the project would affect human health in Washington.
- ◆ A general assessment of cargo-ship impacts beyond Washington waters.
- ◆ An evaluation and disclosure of greenhouse gas emissions of end-use coal combustion in other countries.



# TONGUE RIVER RAILROAD DRAFT EIS

Surface Transportation  
Board's Office of  
Environmental Analysis:

***“One coal tends to replace  
another coal...”***

# OARS FIRMLY IN WATER PULLING UPSTREAM

- ◆ Consensus local support
- ◆ Strong Labor support
- ◆ Statewide poll shows majority support
- ◆ Site is right: planned, zoned, brownfield, deep channel, rail meets river

# THE FINISH LINE

- ◆ Asian growth is demand-driven
- ◆ Energy security for American allies
- ◆ PRB Coal burns cleaner/efficient
- ◆ Jobs for Americans



# A MILLENNIUM COMMERCIAL



TRADE

ECONOMY

DISCUSSION

AND

QUESTIONS

[www.millenniumbulk.com](http://www.millenniumbulk.com)

